

STANDARD OPERATING PROCEDURES - AS OF 14.11.2020

09 NOV 2020 - 06 DEC 2020

KL. PUTRAJAYA. SELANGOR. KEDAH. PENANG. PERAK. NEGERI SEMBILAN. MELAKA. JOHOR. TERENGGANU

ACTIVITIES AND PROTOCOLS

PROHIBITED

In-person government and private agency meetings involving foreign agency representatives

Exception: Expatriates and C-Suite, provided SOP-compliant; internal meetings in compliance with JPA circulars/directives and MITI guidelines



All IPTA, IPTS, skills training institutes, tahfiz centres, schools, and tuition, music, dance, art, paid Qur'an recital and paid language classes, etc.

Exception: Students taking foreign institution examinations to attend examinations only

All kindergartens, nurseries and childcare centers

Exception: Children of frontliners and parents/guardian who are permitted to work by relevant Ministries. Parents/guardian may send children according to the capacity of the vehicle

All Seminars/Workshops/Courses/Trainings/Conferences/Talks/Exhibitions/and all related activities of Meetings, Incentives, Conventions and Exhibitions (MICE).

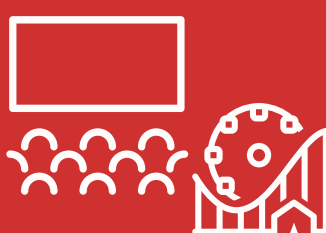


Exception: Ongoing Industrial Training is allowed within the respective training institutions only.

Swimming and contact sports



Tourism Activities leaving or entering CMCO areas



Nightclubs, Pubs, Theme Parks, Indoor Playgrounds and Cinemas

Weddings, Parties and Social Gatherings

PERMITTED



Interstate and District Travel limited for emergencies (with police approval) or work purposes (with employee pass/permission letter)

Private vehicle: 3 pax per household for groceries, supplies and dining-out



Taxi/e-hailing: Max 2 passengers from 6am to 12am

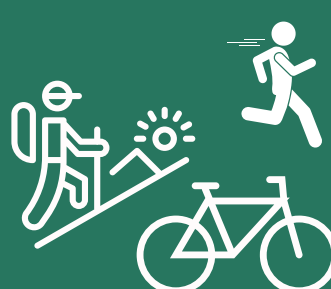
Public transport

Hospitals and Clinics Open 24 hours

Medical Appointments with appointment letter/card



Pharmacies from 8am to 11pm



Individual, non-contact sports, outdoor sports and recreational activities of less than 10 pax



Dine-in limited to 2-4 pax per table, from 6am to 10pm

Food delivery from 6am to 12am



All places of worship are allowed according to limitations set by the respective authorities.

Solemnisation (Muslim) and marriage ceremony (non-Muslim) are allowed with a maximum of 30 guests.



Petrol Stations from 6am to 10pm (Exception: Highways 24 hours)

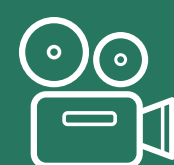


General Hours of Business from 6am to 10pm



Provided: Adhere to SOPs such as wearing face masks properly, manual check-in or via MySejahtera App, temperature checks, ensuring number of customers are limited and to display the maximum number of customers allowed.

Music recordings, concerts, filming, talk shows, live events etc. in recording studios or outdoor with **NO audience**



Indoor busking with an audience within limitations set by the authorities.



- Daily markets from 6am to 2pm;
- Farmers' markets from 6am to 12pm;
- Wholesale markets from 12am to 5pm;
- Night markets from 4pm to 10pm